

formlabs  | dental

Dentistry Made Easier™

Hardware

Software

Services

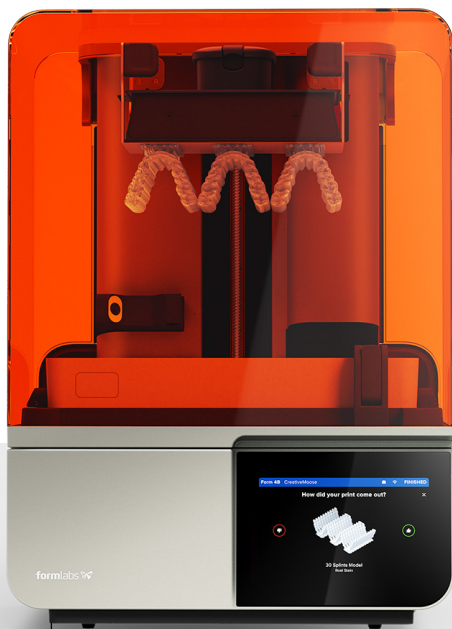
Education



dental.formlabs.com

Formlabs Dental Ecosystem at a Glance

Validated for every dental application, our reliable, end-to-end 3D printing solutions are easy to integrate into your existing practice or lab.



Form 4B

Blazing Speed Meets Unmatched Accuracy

Form 4B delivers unprecedented print speeds and unrivaled accuracy that matches your commitment to a perfect fit, every time.

PAGE 4



Form Wash (2nd Generation)



Form Cure

Simplified Dental Post-Processing

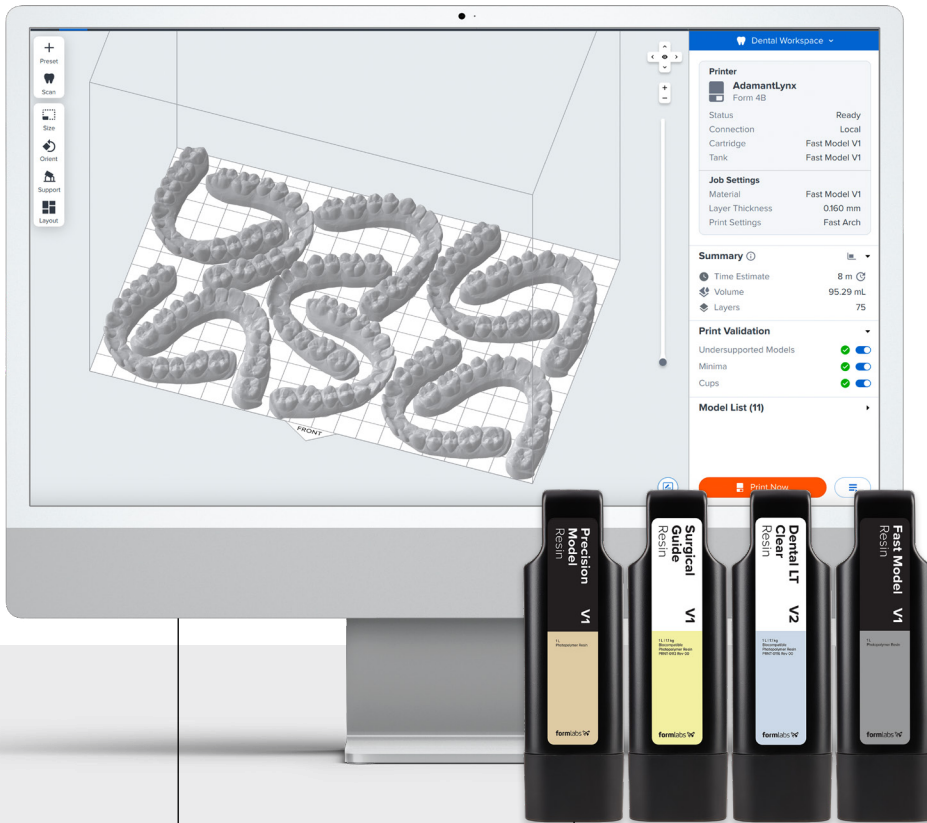
Unlock same-day dentistry with our automated washing and curing solutions.

PAGE 8



Fast Cure

Dedicated Support and Education for Dental Professionals



Software

The Most Streamlined Solutions for One-Click Printing

From IOS integration to remote print monitoring, our software empowers you to press print from anywhere.

PAGE 10

Specialized Dental Resins

Fully Validated Resins for Every Dental Application

Grow your business with our advanced range of proprietary resins including biocompatible options.

PAGE 7

Dental Service Plan (DSP)

Premium Dental 3D Printing Support

Get started immediately with personalized training and priority access to our experts.

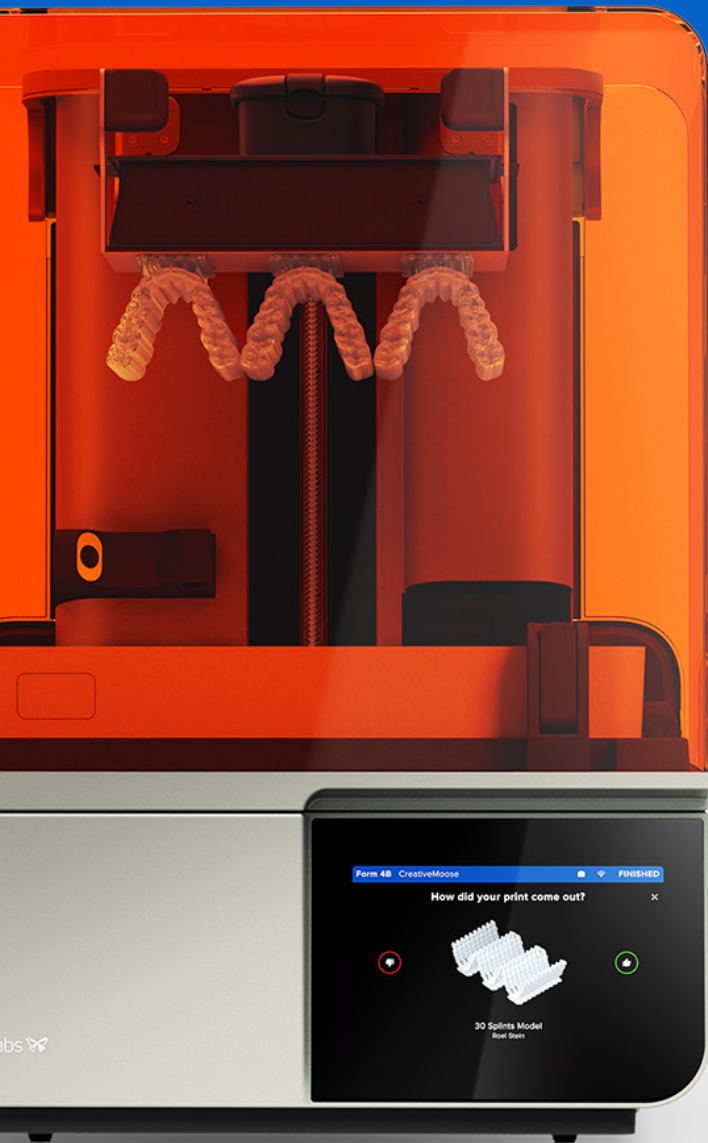
PAGE 12

Formlabs Dental Academy

Your Learning Hub for Digital Dentistry

Master digital dentistry with our in-depth library of tutorials and guides for every workflow.

PAGE 12



Form 4B

Blazing Speed Meets Unmatched Accuracy

FAST

11 models* in nine minutes

VERSATILE

15+ Formlabs resins and Open Material Mode

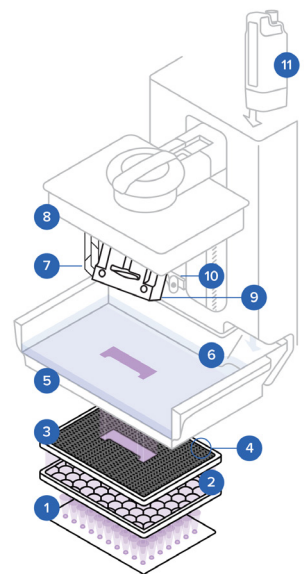
INTUITIVE

Anyone can learn in 15 minutes

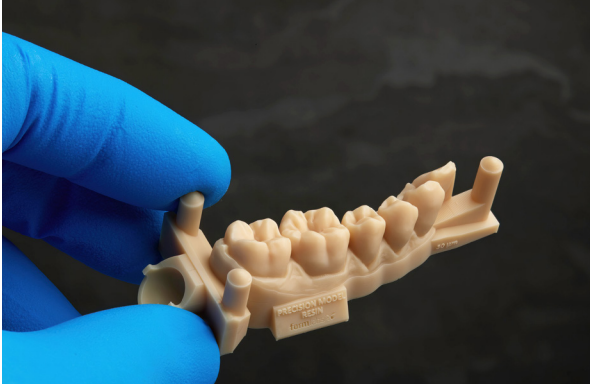
ACCURATE

A perfect fit every time

- 1 LEDs
- 2 Collimating Lenses
- 3 Light Processing Unit 4
- 4 Release Texture
- 5 Flexible Film Resin Tank
- 6 Resin
- 7 Supports
- 8 Build Platform
- 9 Printed Part
- 10 Six Intelligent Control Systems
- 11 High-Speed Automatic Resin Handling



Powered by our Low-Force Display™ (LFD) Print Engine, Form 4B delivers unprecedented speed, while maintaining superior dimensional accuracy and surface finish across 15+ validated dental applications.



Industry-Leading Print Quality

UNRIVALED ACCURACY
FOR A PERFECT FIT

Deliver dental parts with industry-leading surface accuracy of over 95% of data points within 50 μm of the original CAD data, and consistency across the entire build platform.



Advanced 3D Printing Materials

FULLY VALIDATED WORKFLOWS FOR 15+
DENTAL APPLICATIONS

Unlock the widest range of validated dental materials in the industry—including an advanced range of biocompatible options, manufactured in our state-of-the-art facilities to the highest ISO standards—and other certified third-party resins. Formlabs Dental 3D printers also offer the flexibility to print any resin using Open Material Mode.



An Unmatched Seamless Workflow

AUTOMATED,
MESS-FREE PRINTING

Discover the world's most effortless 3D printing workflow. Instantly remove parts without tools with Build Platform Flex, seamlessly switch between resins with Intelligent Material Handling, and keep your workspace spotless with automated, spill-proof resin dispensing.



Unprecedented Print Speeds

PRINT 11 MODELS* IN NINE MINUTES

Form 4B is faster than ever, without compromising on accuracy. Print jobs are completed up to four times faster than previous generations of Form Series 3D printers, regardless of whether you're printing one part or a full build platform.

*Models printed using Fast Model Resin at 160 μm



- 1 FORCE SENSOR**
Optimizes print speed across materials and geometries
- 2 CAMERA**
Enables remote monitoring and troubleshooting
- 3 RESIN TEMPERATURE SENSOR**
Adjusts temperature for optimal print results
- 4 RESIN LEVEL SENSOR**
Automatically triggers tank refill
- 5 MIXER DEBRIS SENSING**
Checks for debris to reduce print failures

FORM 4B TECH SPECS

TECHNOLOGY	Masked Stereolithography (MSLA)
PRINT ENGINE	Low Force Display™ (LFD)
BUILD VOLUME (W x D x H)	20.0 × 12.5 × 21.0 cm 7.9 × 4.9 × 8.3 in
LAYER THICKNESS	25-300 µm
XY RESOLUTION	50 µm
AVERAGE PRINT SPEED	40 mm/h
MAXIMUM PRINT SPEED	100 mm/h
RESIN TANK LIFETIME	75,000+ layers with any Formlabs material
PRINTER WEIGHT	18.3 kg 40.4 lb
PRINTER DIMENSIONS	39.8 × 36.7 × 55.4 cm 15.7 × 14.5 × 21.9 in
WARRANTY AND SERVICE	One-year warranty included Paid service and extended warranty options available
SOFTWARE COMPATIBILITY	Windows 7 and up Mac OS X 10.12 and up
FILE TYPES ACCEPTED	STL, OBJ, 3MF

High-Accuracy 3D Printing Materials for Dental Labs and Practices

Validated for every dental application, our reliable, end-to-end 3D printing solutions are easy to integrate into your existing practice or lab.

Diagnostic Models



Temporary Restorations



Clear Aligner Models



Permanent Restorations



Restorative Models



Custom Impression
Trays



Surgical Guides



Patterns for Casting
and Pressing



Occlusal Splints and
Guards



Indirect Bonding Trays



Full Dentures



Direct Composite
Restoration Guides



Temporary All-on-X
Appliances



Hawley Retainer
Models





Dental Part Post- Processing

Achieving peak quality of your dental prints requires a washing and curing process. Say goodbye to complex manual procedures with our automated post-processing solutions that complete the biocompatible workflow. With pre-programmed settings for each material, you can bring parts to consumer-grade quality with the touch of a button.

Set It and Forget It: The **Form 4B** Post-Processing Workflow

STEP 1 **Print**

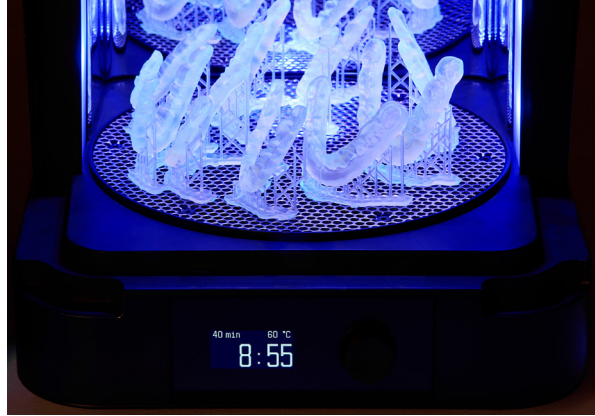
Set up prints in just a few clicks with our pre-programmed settings.

STEP 2 **Wash**

Transfer the Build Platform to Form Wash (2nd Gen) or Form Wash L for an automated deep clean.

STEP 3 **Cure**

Transfer clean parts to Form Cure, Fast Cure, or Form Cure L to bring them to their peak mechanical properties.



Form Wash (2nd Generation)

GLOVE-FREE CLEANING

Form Wash (2nd Generation) has 3x improved agitation of isopropyl alcohol (IPA) or Formlabs Resin Washing Solution to thoroughly clean your printed parts. Set the desired time, or choose from pre-programmed resin settings, and Form Wash takes care of the rest. Use the adjustable platform mounts to seamlessly switch between build platforms.

Form Cure

OPTIMAL RESIN CURING

Bring parts to their peak mechanical properties and dimensional accuracy in just one click with pre-calibrated settings that optimize performance for each material.



Fast Cure

DENTAL PART CURING IN MINUTES

Unlock same-day dentistry with dental part curing in one to six minutes. Fast Cure is our premium auto-curing solution for safely bringing dental parts to peak mechanical properties in record time.

Form Wash L + Form Cure L

LARGE-FORMAT SOLUTIONS FOR HIGH-VOLUME PRODUCTION

Offering high throughput to service your whole fleet, Form Wash L and Form Cure L are capable of post-processing two Form 4B batches at once.

Formlabs Resin Washing Solution

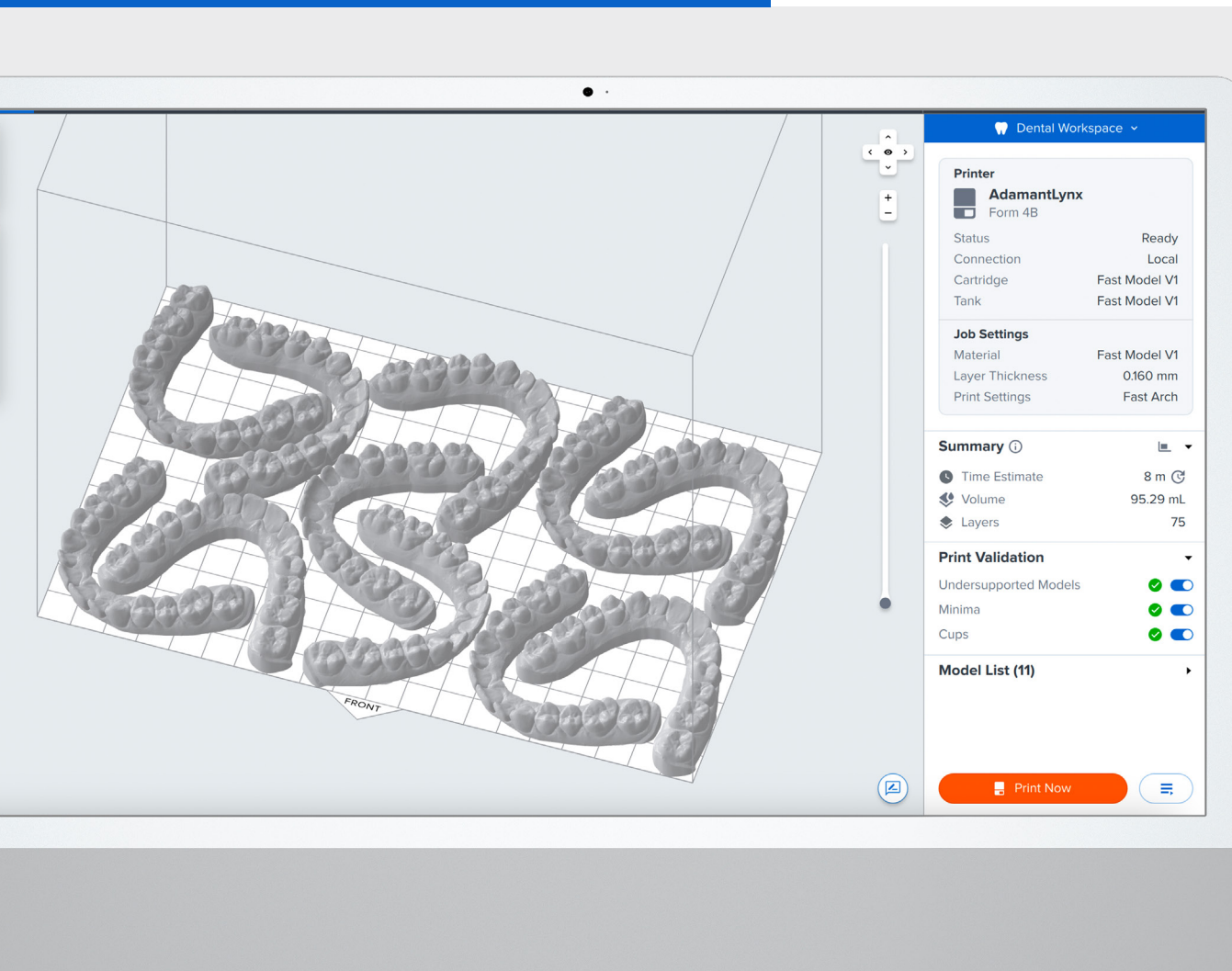
SAFE AND COST EFFECTIVE

This lower-odor washing solution is non-flammable per GHS classification, cleans parts* as well as isopropyl alcohol (IPA), and has twice the longevity for a lower cost per wash.

*Formlabs Resin Washing Solution is compatible with most non-biocompatible Formlabs Resins

Complete Dental 3D Printing Software Solutions

Our comprehensive suite of dental software tools is designed to help you save time, reduce costs, and enhance the overall efficiency of your practice or lab.



PreForm Dental

CLICK LESS, DO MORE WITH THE NEW STANDARD IN DENTAL PRINT PREPARATION SOFTWARE

Our free dental print preparation software is designed to help your team set up prints more effortlessly and efficiently than ever before. Prepare parts for printing in just a few clicks and access your printers remotely from the cloud with advanced software tools.

SCAN TO MODEL

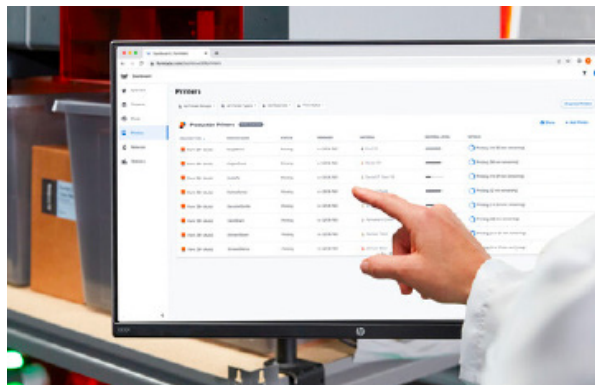
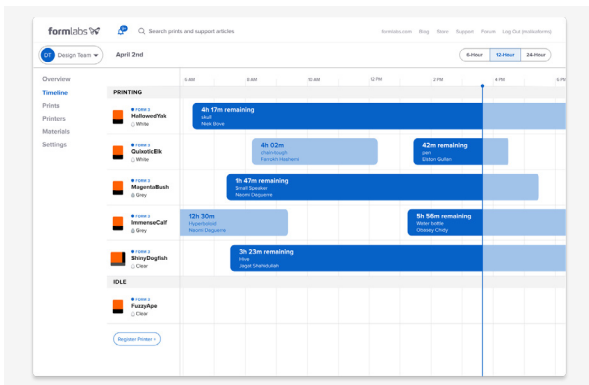
Compatible with every intraoral scanner on the market. Seamlessly bridge the gap between scanning and printing by converting patient scans to printable models in less than 10 seconds.

ONE-CLICK PRINT FOR EVERY INDICATION

Preprogrammed settings enable anyone in your office to print successfully without specialized training. Just select your indication, import your files, and click print.

SCALABLE CUSTOMIZATION TOOLS

Create custom presets according to your preferred material, layer height, orientation, and support settings, then save it and apply it to subsequent jobs.



Dashboard

MAXIMIZE OPERATIONAL EFFICIENCY WITH OUR FREE PRINTER MANAGEMENT PORTAL

Manage your dental printing operations from anywhere with our free online printer management portal that provides insights that empower you to run your business with maximum efficiency.

Printer and Consumables Tracking

Track real-time data on printing, material, and employee usage.

Remote 3D Printing

Start print jobs from anywhere, anytime for back-to-back throughput.

Printer Groups

Manage multiple 3D printers across different purposes or locations.

Fleet Control

ADVANCED MULTI-PRINTER MANAGEMENT FOR PREFORM DENTAL AND DASHBOARD

Automate and optimize print jobs across your whole fleet by activating advanced optimization features within PreForm and Dashboard.

Automated Printer Assignment

Fleet Control automatically assigns print jobs to the next available printer.

Consolidated Insights & Advanced Settings

Take full control with live consolidated updates and advanced user settings.

Integrated Updates

Update your printer fleet all at once with mass firmware updates.



Dedicated Support and Education for Dental Professionals

Enjoy a seamless transition to digital dentistry with our community of experts and library of learning resources.

Formlabs Dental Service Plan (DSP)

PREMIUM DENTAL 3D PRINTING SUPPORT

Get started immediately and unlock the full potential of your Formlabs 3D printer with our dental service experts by your side. Designed by dental professionals, for dental professionals, our comprehensive Dental Service Plan includes priority access to the best support in the industry, personalized onboarding and training, fast maintenance, and more.

- Priority phone and email support from certified dental experts
- Live Q&A session with a certified dental expert to ask questions about your specific workflow
- Hot Swaps: if troubleshooting doesn't get you back to printing, we'll expedite a replacement
- Extended warranty converge up to three years

Services

Education

Formlabs Dental Academy

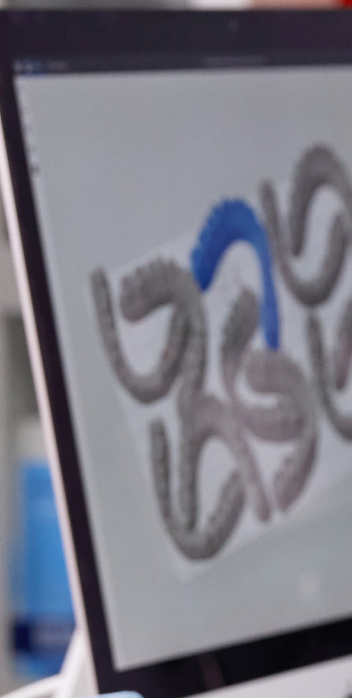
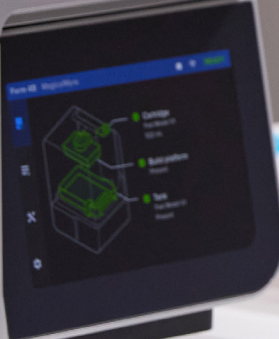
YOUR LEARNING HUB FOR DIGITAL DENTISTRY

Learn how to perform every supported digital dentistry workflow with Formlabs' comprehensive library of step-by-step guides, clinical papers, and trainings covering over one hundred topics.

- Educational library covering multiple dental topics
- Step-by-step guides for every supported dental application
- 24/7 on-demand learning options in multiple languages
- Clinically authored case studies and white papers
- In-person and virtual courses by Formlabs and Trusted Educational Centers
- Exclusive access to Formlabs product offers



formlabs





formlabs  | dental

**Blazing
Speed
Meets
Unmatched
Accuracy**

Maximize Your Time, Money, and Throughput With Formlabs Dental 3D Printing Solutions

“The surface comparison yielded some of the best results I have ever measured on a 3D printer.”

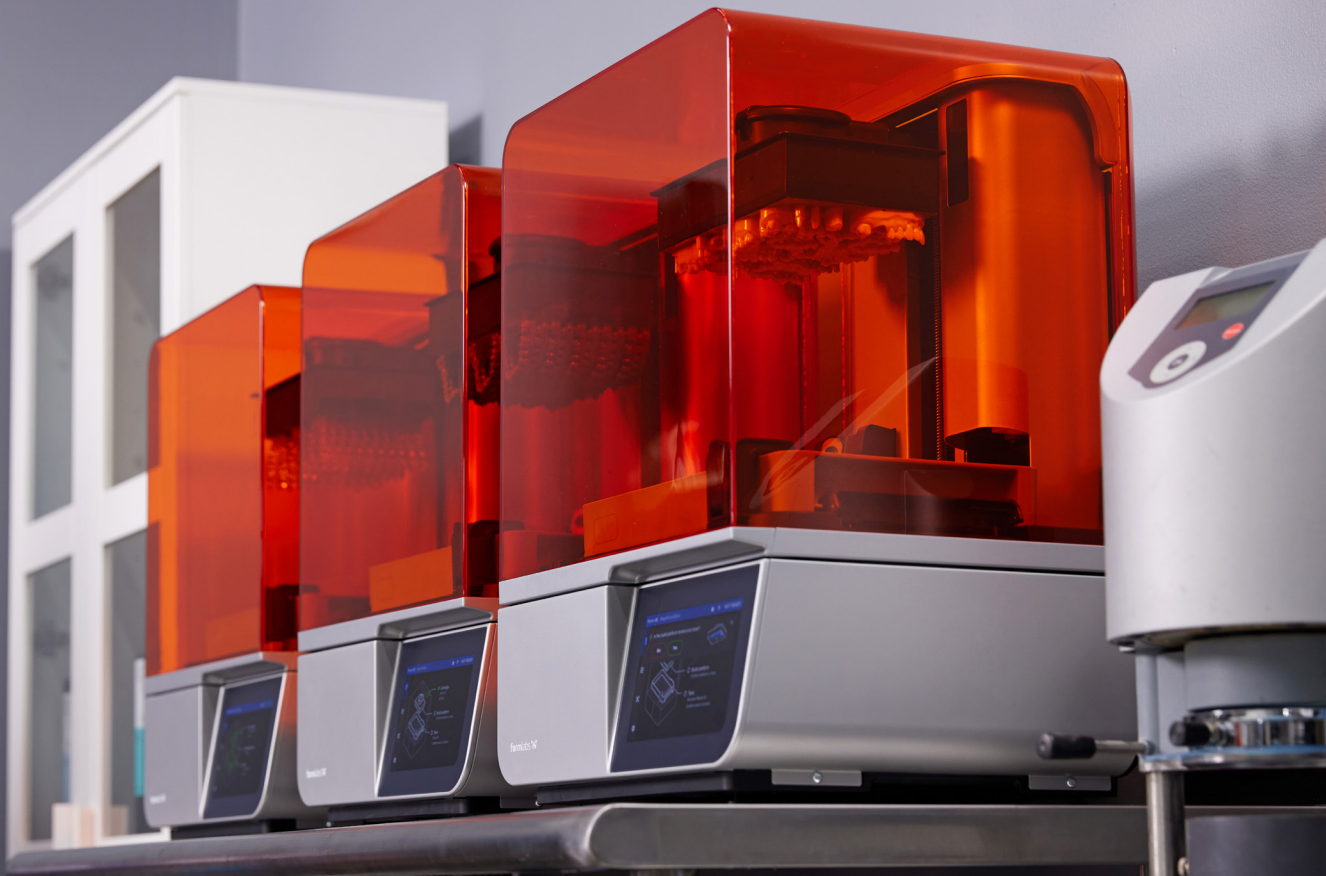
Stephan Kreimer
Master Dental Technician and Director
Kreimer Dentallabor GmbH & Co. KG

“It’s a very easy set-up and very fast! From a user standpoint, meaning someone that is not trained to 3D print, this is a really easy set-up. It’s so easy to use and intuitive.”

Dr. Lisa Alvetro DDS
Orthodontist & Owner
Alvetro Orthodontics

“We can actually do same-visit printing, where we can go from a scan to a printed model and fabricate an appliance very easily within 10 minutes so we have it before a patient leaves.”

Dr. Christopher Baer,
DMD, Baer Dental



formlabs  **dentals**
AUTHORIZED PARTNER